

## Flushing rings



### Applications

- ❖ For diaphragm seals in flanges in order to prevent clogging of instrument connection
- ❖ The flushing ring is mounted between the process flange and the diaphragm seal

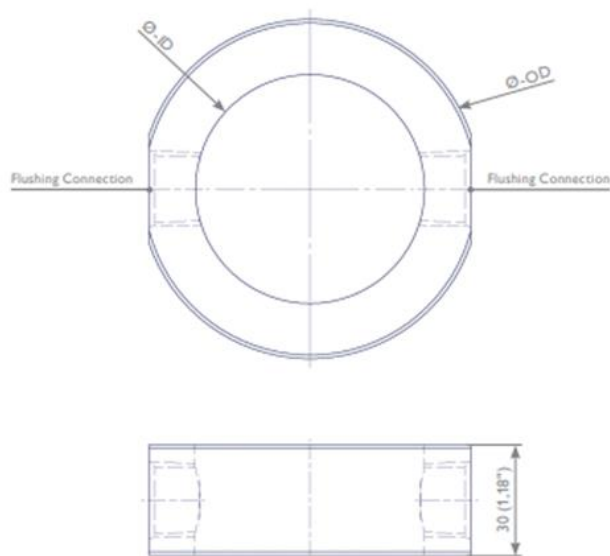
### Standard features

- ❖ The flushing ports allow the washing out of particles accumulated in front of the membrane.
- ❖ The pressure chamber can be vented or drained or filled with a cleaning liquid and subsequently flushed, depending on the requirement.
- ❖ Standard flushing connection: 1/2 NPT female
- ❖ Sealing face:
  - Acc. to EN 1092-1 Form B1
  - Acc. to ASME B 16.5 RF
- ❖ Materials: 316/316L/1.4401/1.4404, quadruple certified Standard Features

### Special features

- ❖ Flushing connection with different female threads: G 1/2, G 1/4, 1/4 NPT
- ❖ Pipe plugs and various valves
- ❖ Other sealing faces, e.g. groove, tongue, RTJ
- ❖ Exotic Alloys, e.g. Duplex, Alloy C-276, Alloy 625

# Standard design flushing ring



## Connection acc. to ASME B16.5

NPS	Class*	Dimensions in mm (inch)	
		OD	ID
1"	150 - 600	63,5 (2,5")	34 (1,34")
1 1/2"	150 - 600	73,2 (2,88")	42 (1,65")
2"	150 - 600	91,9 (3,62")	62 (2,44")
3"	150 - 600	127 (5")	92 (3,62")
4"	150 - 600	157,2 (6,19")	92 (3,62")
5"	150 - 600	185,7 (7,31")	126 (4,96")

## Connection acc. to EN 1092-1

DN	PN*	Dimensions in mm (inch)	
		OD	ID
25	16 - 100	68 (2,68")	34 (1,34")
40	16 - 100	88 (3,46")	42 (1,65")
50	16 - 100	102 (4,02")	62 (2,44")
80	16 - 100	138 (5,43")	92 (3,62")
100	16 - 100	162 (6,38")	92 (3,62")
125	16 - 100	188 (7,40")	126 (4,96")

\* Higher pressure ranges on request.

# Mounting example

