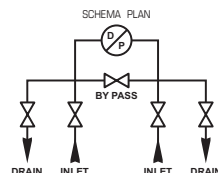
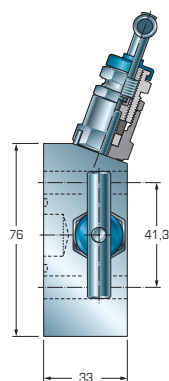
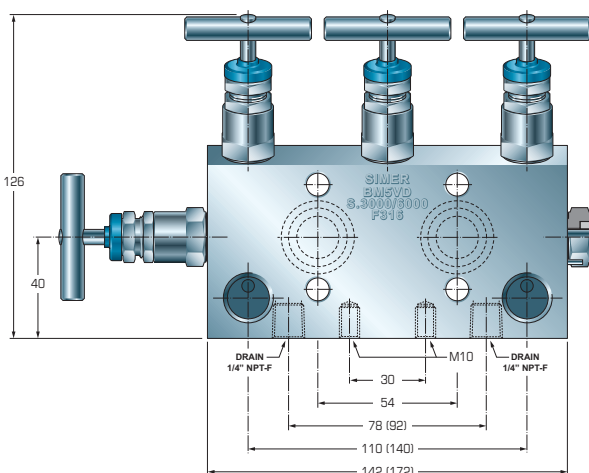


MANIFOLD A CINQUE VALVOLE PER MONTAGGIO DIRETTO SU TRASMETTITORE DI PRESSIONE DIFFERENZIALE FIVE VALVES BY-PASS MANIFOLD FOR DIRECT MOUNTING ON DIFFERENTIAL PRESSURE INSTRUMENT

Mod. BM5VD



- Valori tra parentesi per spurghi da 1/2" NPT-F
- Bracket values for drain connections 1/2" NPT-F

Caratteristiche tecniche

- Corpo ricavato da barra con bonnet filettato esternamente
- Connessioni processo filettate 1/2" NPT-F ANSI B1.20.1
- Connessioni strumento flangiate interasse attacchi 54 mm
- Attacchi di spurgo standard filettati 1/4" NPT-F ANSI B1.20.1 (A richiesta si possono fornire con spurghi da 1/2" NPT-F).
- Pressione nominale di esercizio:

SERIE 3000 - 6000 / 210 - 420 Kg/cmq.

- Baderne in Teflon come standard per temperature fino a 180° C. Per temperature fino a 500°C si forniscono baderne speciali esenti amianto.
- Passaggi interni con diametro 5,0 mm
- Materiali: AISI 316. Altri materiali a richiesta
- Il manifold viene fornito completo di n.4 viti da 7/16 UNF e n.2 O-Ring in teflon caricato vetro.

Technical specifications

- Bar stock body with outside screwed bonnet
- Process connections threaded 1/2" ANSI B1.20.1
- Instrument connections flanged centre to centre 54 mm
- Standard drain connections thrd. 1/4" NPT-F ANSI B1.20.1 (Drain connections thrd. 1/2" NPT-F on request only)
- Nominal operating pressure:
SERIE 3000 - 6000 / 210 - 420 Kg/cmq.
- Packing material PTFE as standard max temperature 180°C. For temperature until 500°C special packing free asbestos.
- Orifice size 5,0 mm
- Material: AISI 316. Other material on request
- The manifold is complete of nr. 4 screw threaded 7/16 UNF and nr. 2 O-Ring material glass charged PTFE.

Come ordinare - How to order

BM5VD

- 3

/ 16

- 2

- N

- T

Modello - Model

180° - **BM3VFN**

Rating

S.3000 - **3**
S.6000 - **6**

Materiale - Material

AISI 304 - **04**
AISI 316 - **16**
AISI 316 L - **17**
Altri / Other - **00**

Dimensione attacchi
Connect dimension

2 - 1/2"
4 - 1/4"

Tipo attacchi
Connect dimension

N - NTP
G - Gas Cil.
Gc - Gas con.

Baderne - Packing

T - Teflon / PTFE
Max Temp. 180°C
G - Grafoil
Max. Temp. 500°